

**BRIGGS & STRATTON
CORPORATION
Illustrated Parts List**

**VERTICAL CRANKSHAFT
SHORT BLOCK ASSEMBLIES**

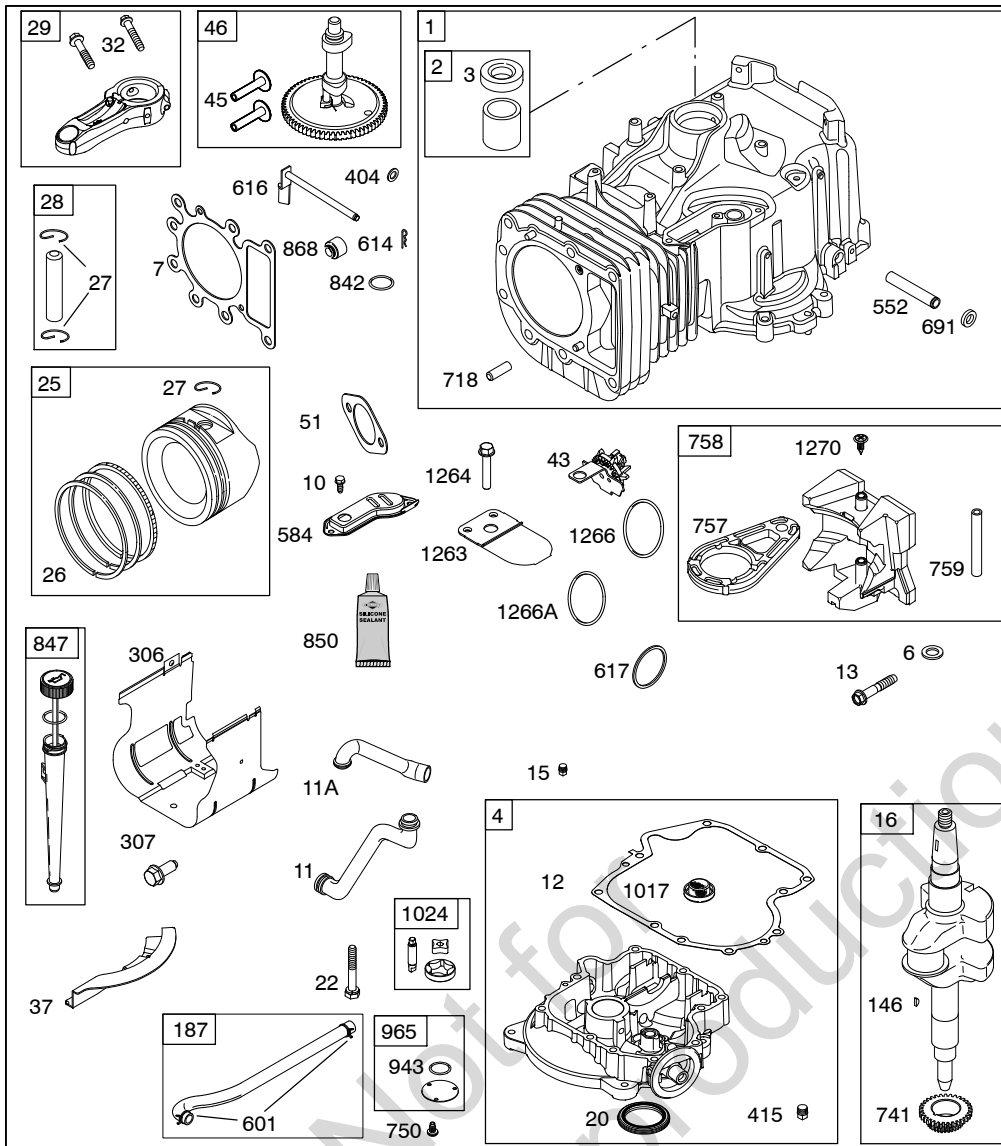
**697762
699341**

For use on Engine Model Series
310000

INSTRUCTIONS

To obtain the correct part numbers for an engine which has been rebuilt with a Short Block Assembly, follow these instructions:

- A. For all parts shown in the illustrated view to the left, use this Parts List.
- B. For all other parts, refer to the Illustrated Parts List which is appropriate for your engine by Model, Type and Code (Serial) Number.



REF. NO.	PART NO.	DESCRIPTION	REF. NO.	PART NO.	DESCRIPTION	REF. NO.	PART NO.	DESCRIPTION
1	796010	Cylinder Assembly	26	791936	Ring Set (Standard)	617	692138	Seal-O Ring (Intake Manifold)
2	399265	Kit-Bushing/Seal (Magneto Side)		Note:		691	692407	Seal-Governor Shaft
3	391086	Seal-Oil (Magneto Side)	27	698469	Lock-Piston Pin	718	690959	Pin-Locating
4	697188	Sump-Engine	28	796007	Pin-Piston (Standard)	741	697128	Gear-Timing
6	690310	Washer (Cylinder Head)	29	794571	Rod-Connecting	750	790832	Screw (Oil Pump Cover)
7	794114	Gasket-Cylinder Head		794122	Rod-Connecting (Used on 699341)	757	793242	Link-Counterweight
10	697157	Screw (Breather Assembly)	32	791118	Screw (Connecting Rod)	758	697134	Counterweight
11	699879	Tube-Breather	37	699882	Guard-Flywheel	759	697392	Pin-Counterweight
11A	794683	Tube-Breather	43	691968	Slinger-Governor/Oil	842	691031	Seal-O Ring (Dipstick Tube)
12	697110	Gasket-Crankcase	45	690564	Tappet-Valve	847	699880	Dipstick/Tube Assembly
13	793988	Screw (Cylinder Head)	46	793880	Camshaft	850	100106	Sealant-Liquid (Not included, order separately)
15	690946	Plug-Oil Drain	51	692137	Gasket-Intake	868	690968	Seal-Valve
16	797585	Crankshaft (Used on 697762)	146	691639	Key-Timing	883	692236	Gasket-Exhaust
	797583	Crankshaft (Used on 699341)	187	699883	Line-Fuel (Molded)	943	690589	Seal-O Ring (Oil Pump Cover)
20	690947	Seal-Oil (PTO Side)	306	698454	Shield-Cylinder	965	499613	Cover-Oil Pump
22	692125	Screw (Crankcase Cover/Sump)	307	691003	Screw (Cylinder Shield)	1017	690770	Screen-Oil Pump
25	697159	Piston Assembly Standard	404	691691	Washer (Governor Crank)	1024	794644	Pump-Oil
	Note:	697162 Piston Assembly (.020" Oversize)	415	794903	Plug (Sump)	1263	697124	Reed-Breather
			552	697144	Bushing-Governor Crank	1264	697104	Screw (Breather-Reed)
			584	697112	Cover-Breather Passage	1266	691917	Seal-O Ring (Intake Elbow)
			601	791850	Clamp-Hose	1266A	697123	Seal-O Ring (Intake Elbow)
			614	691620	Pin-Cotter	1270	697156	Plug AVS-Counter-weight
			616	692012	Crank-Governor			



SHORT BLOCK ASSEMBLY INSTRUCTIONS

GENERAL INFORMATION

To use a Short Block, ignition, carburetion and starter parts are transferred from the old engine to a short block assembly. This reduces repair time and provides an engine with all new internal parts assembled to new engine production standards.

All parts being transferred should be thoroughly cleaned of dirt, oil and grease, and carefully inspected to be sure that all parts are suitable for additional service. Additional engine parts necessary for the repair of the old engine should be supplied from parts stock.

Any new parts that are required should be ordered from the parts list covering the original engine model - type - code number. In some instances the internal parts in the Short Block differ from those used in the original engine. Therefore, to identify the rebuilt engine for future parts requirements, a metallic self-adhesive label is supplied in an envelope with each Short Block. The label bears a symbol (example V-1) and should be attached to the engine adjacent to the model, type and code numbers that are stamped on the engine identification nameplate. At any time repair parts are ordered, add the symbol to the original type number (example 0134 V110). This will permit identification of the proper parts in the Short Block.

To apply the symbol label, first thoroughly clean the area in which it will be applied using petroleum solvent. Carefully peel the backing from the label by starting at one corner. Apply label evenly in position, using finger pressure to smooth out the surface of the label.

SPECIAL INSTRUCTIONS

LUBRICATE UPPER CYLINDER:

Before installing the cylinder head, move piston near top of cylinder bore. Place 2 tablespoons of clean engine oil around outer diameter of piston. Crank slowly to spread the oil. This will protect the upper surfaces of the piston and cylinder bore during the first few moments of operation.



WARNING: BEFORE STARTING OR RUNNING ENGINE, STATIC ADJUSTMENT OF THE GOVERNOR MUST BE MADE. FAILURE TO MAKE STATIC ADJUSTMENT COULD RESULT IN ENGINE OVERSPEEDING WHICH MAY RESULT IN ENGINE OR EQUIPMENT DAMAGE CAUSING PERSONAL INJURY OR PROPERTY DAMAGE.

ALWAYS REFER TO THE APPROPRIATE BRIGGS & STRATTON REPAIR MANUAL FOR PROPER STATIC GOVERNOR ADJUSTMENTS.